



# GEOMETRIC PULLOVER

by Iudiveem

**LEVEL:** Intermediate to advanced

**MODEL:** Oversized intarsia/fairisle pullover in Small, Medium-Large and Large-Extra Large. The photo shows a size Small, for the other sizes, all you need to do is add 6 stitches on each side to make another pattern repeat. Don't forget to check your swatch before choosing your size!

## **MATERIALS:**

- One pair size 4mm needles (size #6 US) OR SIZE TO GET GAUGE
- One circular or set of double point size 4mm needles (size #6 US)
- 4-5 balls white yarn • 3 balls pink yarn • 3 balls red yarn • 1 ball black yarn

## **Cotton Used:**

- Red and White: SALSA by Cheval Blanc (60% Cotton 40% Acrylic, 110m [120 yds.] / 50 g. [1.75 oz])
- Black: CELESTE by Cheval Blanc (50 % Cotton, 10% Silk, 40% Acrylic, 135m [147 yds.] / 50g [1.75 oz])
- Light Pink: CABOTINE by Phildar (55% Cotton 45% Acrylic, 124m [135 yds.] / 50g [1.75 oz]), color 0021 - Bengale
- Dark Pink: THALASSA by Phildar (75% Cotton 25% Viscose, 81m [88 yds.] / 50g. [1.75 oz]), color 0027 - Bengale

## **GAUGE:**

10 x 10 cm [4" x 4"] in stockinette/fairisle = 20 stitches and 24 rows.

## Back:

- Cast on 94 stitches (Small); 102 stitches (M-L); 118 stitches (L-XL).
- Knit 11 rows in 2:2 ribbing.
- On the 12th row (the wrong side/back of the work), increase evenly across the sweater - 3 stitches (S); 7 stitches (M-L); 3 stitches (L-XL). Now you have 97 stitches (Small); 109 (M-L) and 121 (L-XL).
- Knit even following the fairisle chart. (The design is repeated 3 times)
- At 61 cm./24" total height, make the shoulders by casting off every other row: 4 x 6 stitches (S); 5 x 6 stitches (M-L); and 7 x 6 stitches (L-XL).
- At the same time, cast off 33 stitches in the center to form the neck. Then cast off each side every other row: 1 x 5 stitches and 1 x 3 stitches.

## Front:

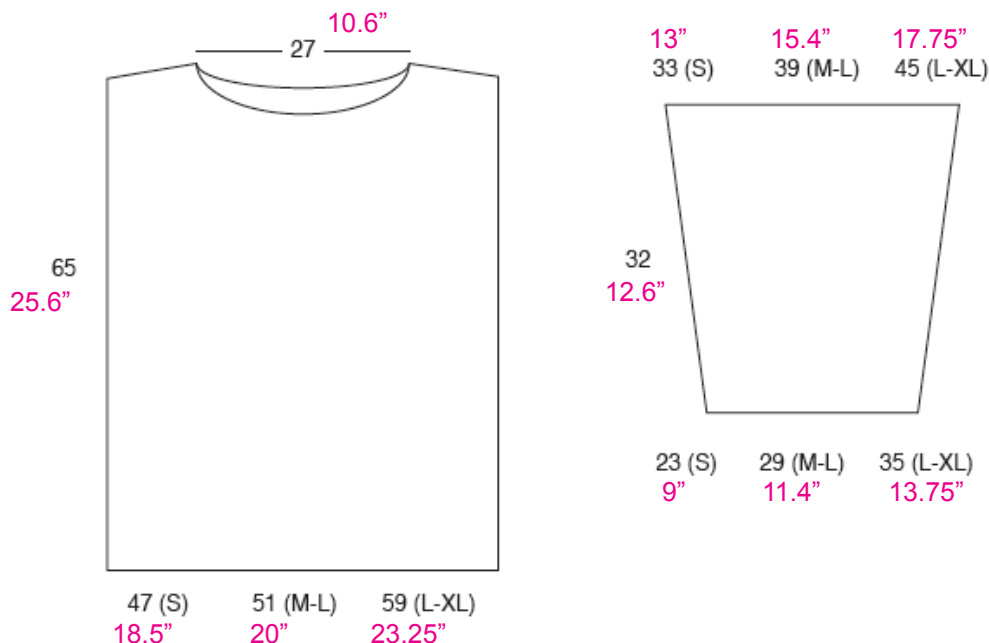
- Knit as for the back.
- At 56 cm./22" total height, cast off 21 stitches in the center to form the neck. Then cast off at each side every other row: 1 x 4 stitches, 1 x 3 stitches, 2 x 2 stitches and 3 x 1 stitches.
- At 61 cm./24" total height, form the shoulders by casting off at each side every other row: 4 x 6 stitches (S); 5 x 6 stitches (M-L); and 7 x 6 stitches (L-XL).

## Sleeves:

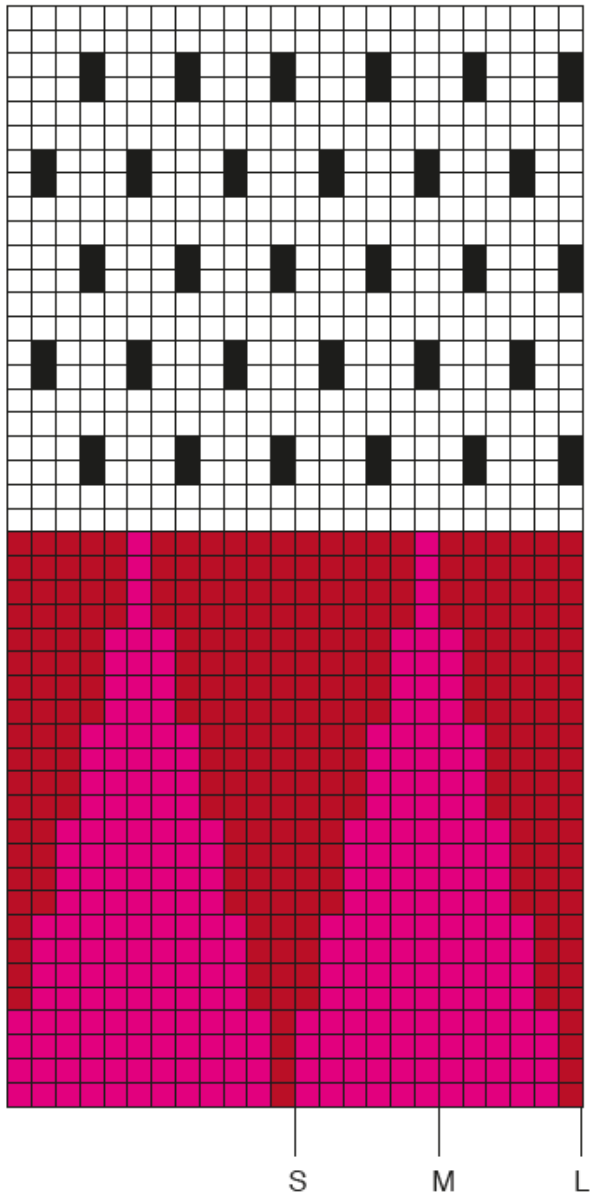
- Cast on 46 stitches (S); 58 stitches (M-L); and 70 stitches (L-XL)
- Knit 7 rows of 2:2 ribbing.
- Knit the 8th row in reverse stockinette (wrong side/back of the work).
- Knit following the fairisle chart, increasing at each side every 8 rows: 2 x 1 increase, and then every 6 rows: 8 x 1 increase.
- 31 cm./12" cast off all stitches.

## Assembly and Neck:

- Sew together shoulders.
- Pick up 104 stitches around neckline with a 4mm./ #6 circular needle or double points.
- Knit 6 rows of 2:2 ribbing.
- Sew the sleeves onto the shoulders and then sew together the sweater sides and sleeves



Front and Back



Sleeves

